

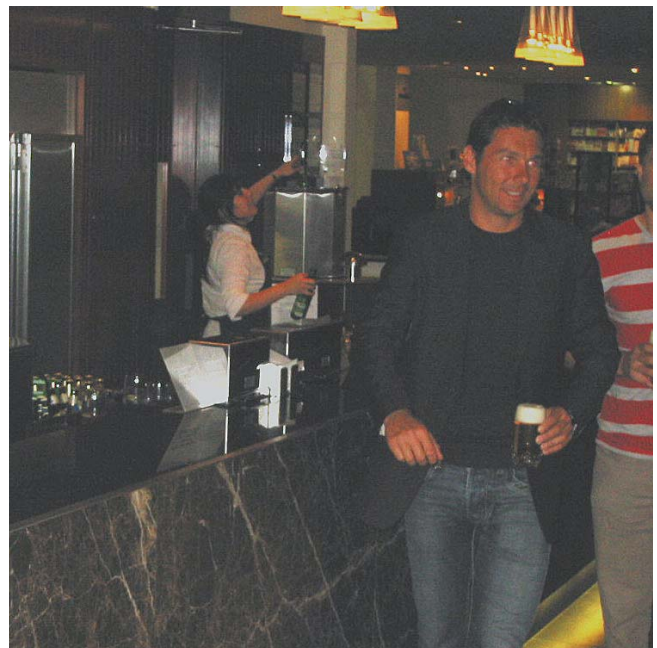


Venues trial BottleCycler to reduce glass waste

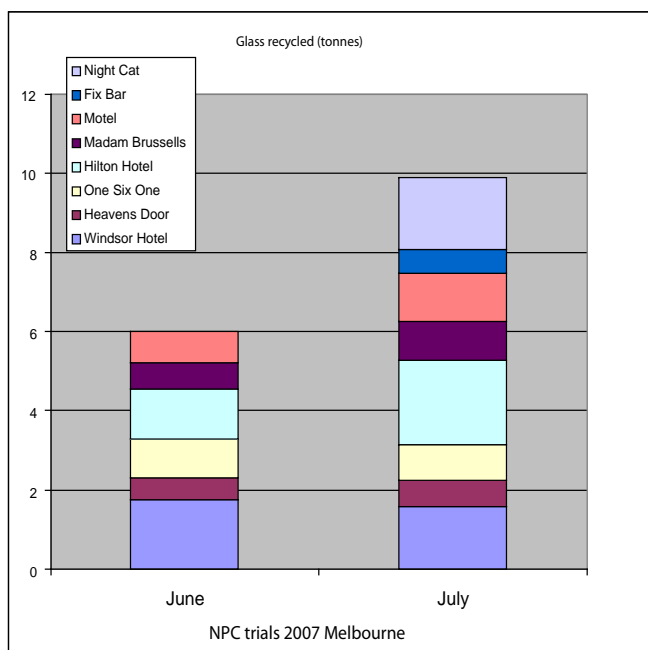
Newsletter designed to provide project partners and trial and prospective participants with the results of the first round of the Packaging Stewardship Forum/BottleCycler trials in Melbourne. It has been a busy quarter with this exciting new initiative now well underway and it is rewarding to see the results below.

By the end of July the trial had 12 BottleCyclers operating in 10 new venues. After only two months, over 19 tonnes of glass had been recycled. 80% of this glass was previously going to landfill in general waste. The trials have in only 2 months, been responsible for 8 new venues sending their glass to be recycled, diverting over 15 tonnes from landfill. As summer returns this figure is expected to increase significantly as venues move into the high season.

Thank you to Qantas Lounge, Night Cat, Motel, Heavens Door, Aqua el Vino, One Six One, Hilton Hotel, Madame Brussels and Hotel Windsor for having the initiative to participate.



Qantas Lounge



About the trial:

BottleCycler together with project partners, Packaging Stewardship Forum, Visy, Lion Nathan, Owen Illinois, Australian Hotels Association, Melbourne City Council, Environmental Protection Authority and Fosters are working to make it easy for the hospitality industry to recycle glass using environmental best practice.

BottleCycler is helping the PSF to achieve the National Packaging Covenant Objectives of:

- Increasing the amount of glass packaging that is recycled
- Reducing the quantity of glass going to landfill

The trial will run for 18 months, during which time 90 venues will experience the BottleCycler service for 2 months without charge.



Current participants say:

It's a win for everybody – the environment wins, I win and the customer wins.

It's just so easy.

I am so happy with it that when we were remodelling the bar, we did so with BottleCycler in mind and positioned it at the bar in full view of the patrons. Positioned here it saves double handling and time. It has generated some great responses from patrons who are pleased that we are recycling efficiently.

It has also improved the visible environment, removing the wheelie bins which were sometimes tipped over creating noise and mess on the street. It's my new toy and I invite prospective users and licensees to come and see it behind the bar.

Brian Frewin, Heavens Door

For us it's perfect. As we are a nightclub, we sell mainly stubbies and being on the first floor there is little space for rubbish. Staff were continually moving the rubbish from the bar to the back of house and then downstairs, about every half hour. With BottleCycler, we just take 2 bins down per night. This has freed staff up to keep the club clean and concentrate on looking after patrons.

It has eased the pressure off everyone. It's quiet, easy to use, we're having less injuries caused by staff being cut by broken glass and we are pleased to be recycling efficiently. Very glad to see the government support this initiative.

Nino, One Six One

During our 2 month trial of BottleCycler here at Hilton we have found many benefits which largely contributed into day to day running of our operation. The main factors such as less man handling and subsequently saving on our labour cost, saving of space, less noise pollution and elimination of unpleasant odours. We will be looking forward to having BottleCycler here at Hilton permanently.

Peter Kirst, Hilton

About glass recycling:

The efficiency of glass recycling is currently very poor in Australia with as little as 10% of new glass being made from recycled glass in the hospitality industry in spite of best efforts made by venues to separate and recycle their empties. The poor rate of recycling is partly due to contamination.

This is where using BottleCycler makes a difference. It delivers over 80% of waste glass collected to the manufacture of new glass, about 10% to alternative applications leaving less than 10% going to landfill.

The environmental benefits of using cullet (crushed glass produced by BottleCycler) instead of raw materials:

- reduced demand on natural resources - each tonne of crushed glass saves 1.1 tonnes of raw materials,
- reduced emissions - recycling glass saves 64% of the energy used to make new glass,
- less to landfill.

In the last quarter in Sydney and Melbourne alone, BottleCycler recycled 650 tonnes of glass from venues who "Do the Right Thing" and use the BottleCycler service.

If you would like to participate in the free trial, to experience the benefits of BottleCycler, please contact BottleCycler staff on **1300 306 039** or email **glen@bottlecycler.com**



www.bottlecycler.com
encouraging environmental
best practice in venues
in Australia